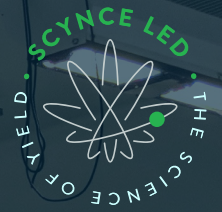


scynce [sci-ence]

noun

The branch of science dealing with LED luminaires and their application within horticulture



PATENTED LIGHT DELIVERY



WIRELESS CONTROL



WATERPROOF



TUNABLE SPECTRUM

The **DRAGON** is our high output, small footprint, indoor warehouse and greenhouse solution. Sporting our new Linear 70° patented optics, it projects more light onto and into the canopy than any other comparable light.

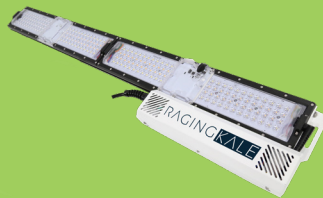
#PenetrationMatters

The **RAGING** series of lights were designed for vertical farming. Future proof your grow with an ultra-slim form factor, waterproof construction, custom Conical 120° optics for even light distribution and full digital control over the spectrum.

#CustomizeYourSpectrum



Single Level Flower - 600 watts
1,000 + avg. PPFD at 35 watts/sq.ft.



RAGING KALE

Multi-Level Veg - 250 watts
Double the output of a T5 at about half the power



RAGING KUSH

Multi-Level Flower - 690 watts
Close proximity & high PPFD with zero hot spots



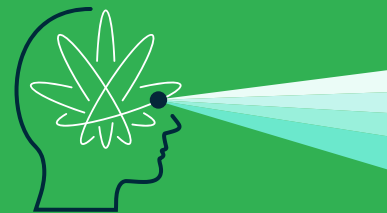
tempo

Wireless Synchronization -
Time synchronization with a battery back-up



echo

Wireless Control Hub - with 0-10v input
Gain complete control over scheduling & spectrum



WHAT'S SO SPECIAL?

www.ScienceOfYield.com
#OpticsMatter

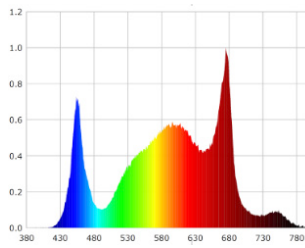
LIGHT COMPARISON CHART

LIGHTS	WATTAGE (power draw from wall)	MARKET APPLICATIONS	COVERAGE AREA & AVERAGE PPFD ($\mu\text{Mol}/\text{m}^2/\text{s}$)		HANGING HEIGHT (OVER CANOPY)	OPTICS	TOTAL FIXTURE PPFD ($\mu\text{Mol}/\text{s}$)	PPF/W	# LEDs	BTUs	SIZE (LxWxH) (Inches)	WEIGHT (lbs.)
			VEG	FLOWER								
RAGING KUSH	690	Vertical Flower	5'x5' (28 w/sf) 658 PPFD	4'x4' (43 w/sf) 1,080 PPFD	8" to 12"	Conic 120	1,677	2.43	4,076	2,353	44 x 40.5 x 3.25	33
RAGING KALE	250	Vertical Veg	4'x3' (21 w/sf) 537 PPFD	4'x2' (31 w/sf) 830 PPFD	8" to 24"	Conic 120	583	2.33	1,536	853	44.5 x 6 x 1.5	12
DRAGON ALPHA	600	Single Level & Greenhouse Flower	6'x5' (20 w/sf) 552 PPFD	5'x3.5' (35 w/sf) 1,040 PPFD	24" to 60"	Linear 70	1,482	2.47	3,678	2,046	44.5 x 8 x 5	25

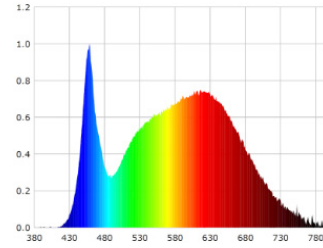
* Coverage area and average PPFD assumes lights are being used in a room with an array/grid of lights or in a tent/room with reflective walls.

TUNABLE SPECTRUM

****NEW**** Full power spectrum tuning is an industry first and gives you, the grower, absolute control over the quantity and quality (type) of light your plants need at any given stage of growth, without sacrificing power.



Dragon Alpha / Raging Kush



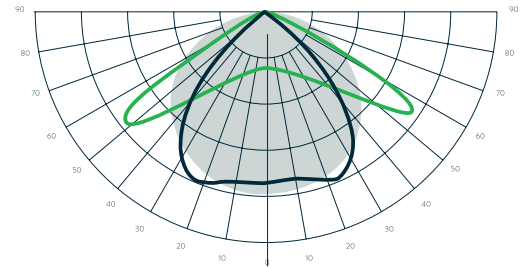
Raging Kale



LIGHT DISTRIBUTION

Scynce utilizes secondary optics that are designed to focus light energy, similar to how glasses help some of us see better. There is no other technology that can harness light from an LED and deliver an even intensity across the canopy, which is why we got them patented!

- Conic 120°
- Linear 70°
- No Optics



WIRELESS CONTROL

The Theia app was designed with the grower in mind. It's quick and easy to set up with intuitive buttons that let you quickly find what matters most.

THEIA (thee-uhh)

- Android & iOS based app
- Group control lights via wireless mesh network.
- Intensity / Dim to Zero
- Ramp on Time (sunset/sunrise)
- Scheduling
- Full control of spectrum
- Custom recipes



NETWORK CONTROL ACCESSORIES



The Echo wireless control hub seamlessly links your existing environmental control system with your Scynce LED lights. With the ability to take five 0-10v inputs, the Echo will wirelessly relay the dimming or spectrum control commands to the lights. Simple, fast and no additional infrastructure costs in running wires everywhere. Whether you have a wired connection to a system like the TrolMaster Hydro X or need a custom API to integrate with systems like Argus, we've got you covered.

*Outputs can be custom programmed to your specific needs.

The Tempo wireless time sync is there to support you when there is an unforeseen power outage. With a built-in battery back up, your light recipes will be right on schedule when the power comes back on.

*The Theia Tempo is not needed if you power cycle your lights with a switch or a timer.

